

3. Admissions

3.1 Admission process

Postgraduate admissions are coordinated by the Graduate School, which invites applications in September each year. Starting from the 2022-23 intake, there are two admission rounds for research postgraduate admissions, i.e. Main round with an application deadline in December, and Clearing round with an application deadline in March of the following year. Applications are considered based on their merits. Local and non-local applications are handled fairly and equally. Successful applicants are normally admitted to the following Fall Term (beginning in August). Applications for deferred admission to the Spring Term (beginning in January) or the next academic year will only be considered if students are unable to take up the study due to illness or an unavoidable cause. Application on medical grounds must be accompanied by a certificate signed by a registered medical practitioner. The maximum period for deferred admission is one year. Applications for deferred admission should be made to the Graduate Division Head before the start of the academic year.

Each year the Graduate School arranges a briefing on postgraduate admission for staff members of the University. The *Manual on Postgraduate Admissions* will be updated and distributed to guide them through the exercise. The admission and notification processes are summarised in the diagram on the following page.

3.2 Entrance requirements

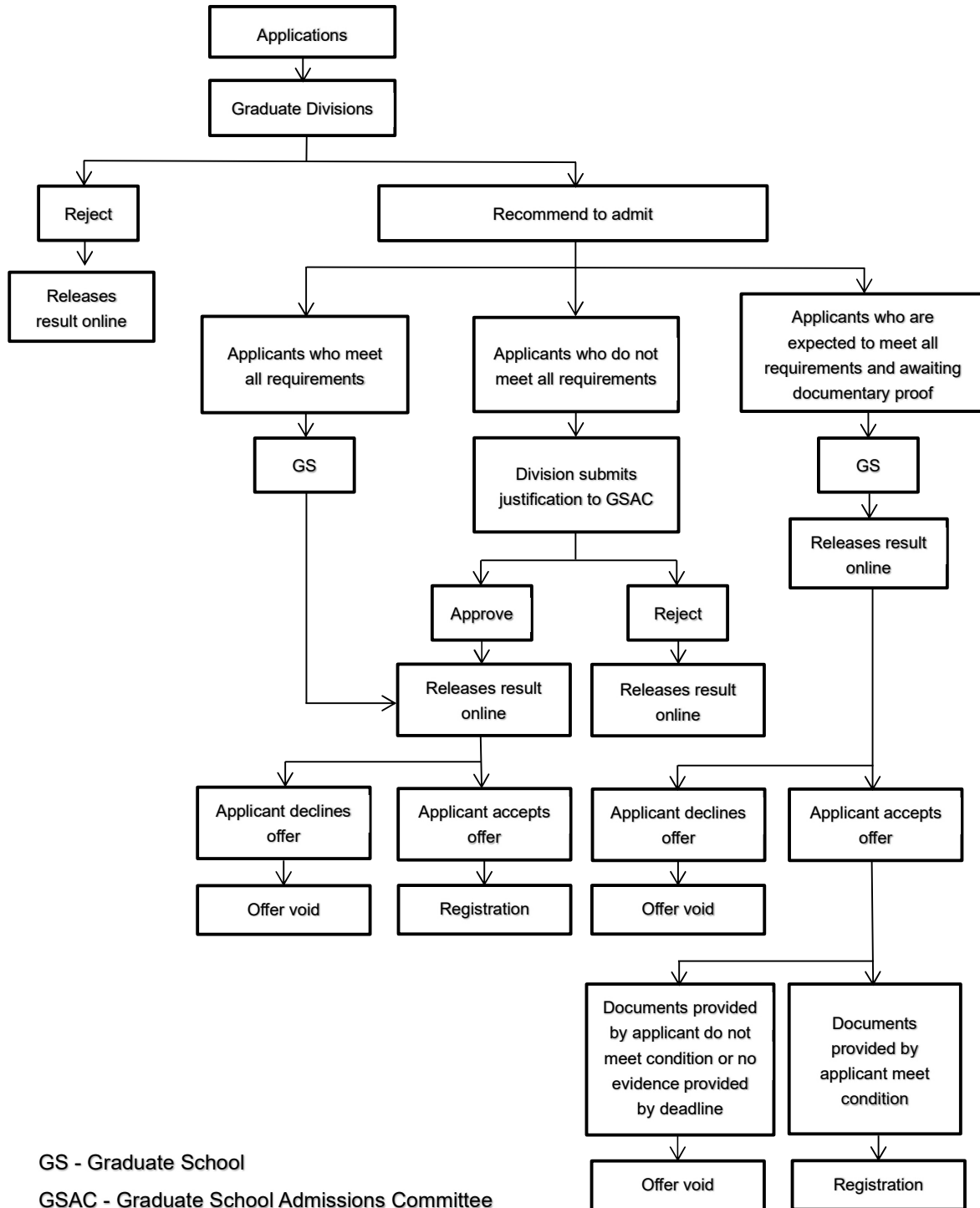
Entrance requirements of different RPg programmes are set out in the *General Regulations Governing Postgraduate Studies* (www.gs.cuhk.edu.hk/download/General_Regulations_Pg.pdf). Graduate Divisions may set additional programme-specific requirements, such as a subject test, or waive such requirements for some special cases. Applicants are also required to fulfil the University's minimum English Language requirement for admission to our RPg programmes. Details are available on the Graduate School Admissions website (www.gs.cuhk.edu.hk/admissions).

Applicants holding academic qualifications by completing programmes which differed substantially from "traditional" curricula may be required to provide evidence or objective assessment from accreditation bodies, e.g., Hong Kong Council for Accreditation of Academic and Vocational Qualifications (HKCAAVQ), for further consideration.

3.3 Quality of students admitted to research postgraduate programmes

For quality assurance purposes, the entry qualifications of admitted RPg students are closely monitored and verified for authenticity at the time of admission. The Executive Committee of the Graduate Council (GCExCo) resolved in November 2011 to entrust Faculties with the responsibility of monitoring the quality of RPg admissions. The entry qualifications of RPg students will be reported to UGC through the annual data collection exercise. Supervisors and staff members responsible for RPg admissions should uphold the standards for student admissions, as one of the quality assurance measures.

Admission and Notification Processes



GS - Graduate School

GSAC - Graduate School Admissions Committee