

# Division of Obstetrics and Gynaecology

The aim of these postgraduate programmes is to provide a sound training in research design and methodology, data analysis and interpretation. Considerable emphasis is placed on the students' acquisition of skills in using clinical and advanced laboratory technologies.

*MPhil in Obstetrics and Gynaecology /  
PhD in Obstetrics and Gynaecology*

Admission Code: OBG

## Programme

The Master's and Doctoral programmes are both research oriented (approximately 75% of units required). The remaining units required are allocated to guided studies. The Faculty of Medicine runs an annual course in Experimental Design and Data Analysis, focusing on evidence- and laboratory-based research. A diploma course is also available in Epidemiology and Biostatistics.

Please visit the Division's homepage for more information.

## Fields of Specialization

- Fetal Growth and Development
- Genetics and Genomics
- Gestational Diabetes
- Labour and Delivery
- Maternal Cardiac Function
- Maternal Hepatitis
- Preeclampsia
- Pre-natal Diagnosis and Screening
- Preterm Birth
- Endometriosis
- Endometrium and Implantation
- Gynaecological Cancer
- Miscarriage
- PCOS

- Urogynaecology and Pelvic Floor
- Psychological Studies
- Twin Pregnancy

## Admission Requirements

In addition to the general requirements of the Graduate School<sup>1</sup>,

### MPhil in Obstetrics and Gynaecology

Applicants should have a recognized Bachelor's degree in a field related to life sciences or the degree of MBChB or equivalent.

### PhD in Obstetrics and Gynaecology

Applicants should have a Master's degree in a field related to life sciences or the degree of MBChB or equivalent.

## Additional Application Information

### Admission Advisor

Prof. WANG, Chi Chiu Ronald

### Application Deadline

**1 December 2016**

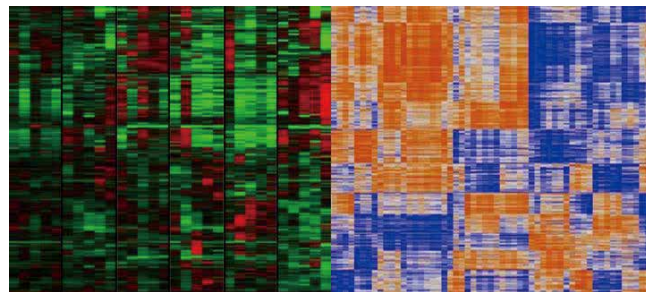
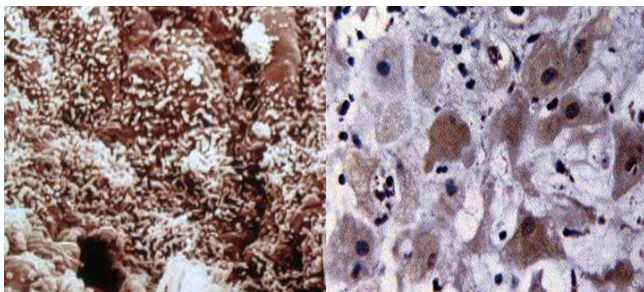
For applicants who apply for PhD programme through the Hong Kong PhD Fellowship Scheme (HKPFS)<sup>2</sup>

**31 January 2017**

For applicants who apply for MPhil programme directly with CUHK

### Throughout the year

For applicants who apply for PhD programme directly with CUHK (i.e. non-HKPFS applicants)



## CONTACT METHODS

Address : Division of Obstetrics and Gynaecology,  
1/F, Special Block E,  
Prince of Wales Hospital,  
Shatin, NT, HK

Tel : 2632-3489  
Fax : 2636-0008  
Website : [www.obg.cuhk.edu.hk](http://www.obg.cuhk.edu.hk)  
Email : [obsgyn@cuhk.edu.hk](mailto:obsgyn@cuhk.edu.hk)

<sup>1</sup> For the general qualifications required for admission to the Graduate School, please refer to pages 16-17.

<sup>2</sup> For information on HKPFS, please refer to page 17.