

Division of Anaesthesia and Intensive Care

*MPhil in Anaesthesia and Intensive Care /
PhD in Anaesthesia and Intensive Care*

Admission Code: ANS

Programme

MPhil in Anaesthesia and Intensive Care

The programme is research-oriented. It will follow a prescribed series of investigation and students should inform themselves in depth about the field of knowledge relevant to the topic of their projects. In addition to satisfying the programme requirements and other requirements as prescribed by the Division, students will be required to submit a research thesis and pass an oral examination before graduation.

PhD in Anaesthesia and Intensive Care

The programme is research-oriented. Students should show ability for independent work and inform themselves in depth about the fields of knowledge relevant to the topic of their projects. In addition to satisfying the programme requirements and other requirements as prescribed by the Division, students will be required to submit a research thesis and pass an oral examination for graduation.

Please visit the Division's homepage for more information.

Fields of Specialization

- Epidemiological Research in Anaesthesia and Intensive Care
- Clinical Research in Anaesthesia, Critical Care and Pain Management
- Molecular Mechanisms of Postoperative Pain
- Molecular Mechanisms in Sepsis

However, topics outside the above fields would also be considered.

Admission Requirements

In addition to the general requirements of the Graduate School¹,

MPhil in Anaesthesia and Intensive Care

Applicants should have a Bachelor's degree normally in a field related to life sciences or the degree of MBChB or equivalent.

PhD in Anaesthesia and Intensive Care

Applicants should have a Master's degree in a field related to life sciences or the degree of MBChB or equivalent.

Additional Application Information

Admission Advisor

Prof. Anna LEE

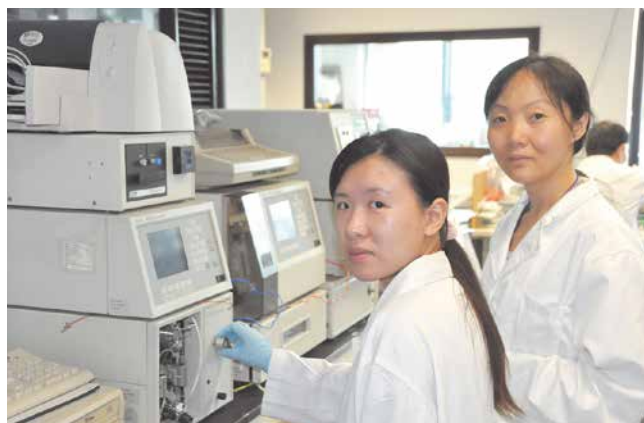
Application Deadline

1 December 2016

For applicants who apply for PhD programme through the Hong Kong PhD Fellowship Scheme (HKPFS)²

31 January 2017

For applicants who apply for MPhil/PhD programme directly with CUHK (i.e. non-HKPFS applicants)



CONTACT METHODS

Address : Division of Anaesthesia and Intensive Care,
4/F., Main Clinical Block and Trauma Centre,
Prince of Wales Hospital,
Shatin, NT, HK

Tel : 2632-2735
Fax : 2637-2422
Website : www.aic.cuhk.edu.hk
Email : ans@med.cuhk.edu.hk

¹ For the general qualifications required for admission to the Graduate School, please refer to pages 16-17.

² For information on HKPFS, please refer to page 17.