

Programme

MPhil Stream

Students are required to complete a minimum of 39 units for graduation, including a minimum of 12 units of lecture courses, 24 units of thesis research courses and 3 units of seminar courses.

PhD Stream

Students are required to complete a minimum of 65 units for graduation, including a minimum of 12 units of lecture courses, 48 units of thesis research courses and 5 units of seminar courses. Student must pass the candidacy examination within 24 months from first entry.

Please visit the Division's homepage for more information.

Fields of Specialization

- Bioactive components in foods
- Nutraceutical and functional food development
- Food toxicology and safety
- Food flavor and quality
- Nutrigenomics and chronic diseases
- Nutrition and immunity

Admission Requirements

Applicants must meet the general qualifications required for admission to the Graduate School¹ and should have a degree in Food Science, Nutrition or related fields from a recognized university. Applicants are advised to contact a prospective advisor to discuss their area of interest before submitting an application. All applicants must also fulfill the "English Language Proficiency Requirement" as stipulated by the Graduate School before being considered for admission.

Additional Application Information

Admission Advisor

Prof. Peter C.K. CHEUNG

Application Deadline

1 December 2016

For applicants who apply for PhD programme through the Hong Kong PhD Fellowship Scheme (HKPFS)²

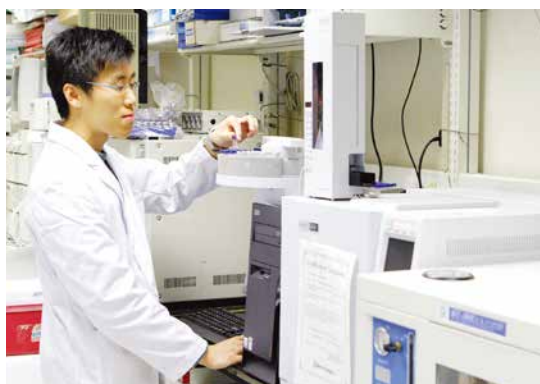
31 December 2016

For applicants who apply for MPhil programme directly with CUHK

Throughout the year

For applicants who apply for PhD programme directly with CUHK (i.e. non-HKPFS applicants)

Applications will be considered subject to the availability of vacancies. Applicants are encouraged to apply as early as possible preferably by 31 December 2016.



CONTACT METHODS

Address : Division of Life Sciences
MPhil-PhD in Food and Nutritional Sciences
186, South Block, Science Centre
The Chinese University of Hong Kong
Shatin, NT, HK

Tel : 3943-6348 / 3943-4045
Fax : 2603-7246
Website : www.cuhk.edu.hk/fns
Email : lscipg@cuhk.edu.hk

¹ For the general qualifications required for admission to the Graduate School, please refer to pages 16-17.

² For information on HKPFS, please refer to page 17.